

SUPERCALIFRAGILISTICEXPALIDOCIOUS

from *MARY POPPINS*

For Unison Voices (& Split) and Piano

Arranged by
IAN JEFFERSON

Words and Music by
RICHARD M. SHERMAN & ROBERT B. SHERMAN

Souicodilaipxecitsiligarfilacrepus! ♩ = 120

Piano

The piano introduction consists of two staves. The right hand starts with a treble clef, a key signature of two flats (B-flat and E-flat), and a 4/4 time signature. It begins with a forte (*f*) dynamic and features a series of chords and eighth notes. The left hand starts with a bass clef and provides a steady accompaniment of chords and eighth notes. The piece concludes with a final chord in the right hand.

5 UNISON CHOIR

mf

The first vocal line is written on a single staff with a treble clef, a key signature of two flats, and a 4/4 time signature. It begins with a mezzo-forte (*mf*) dynamic. The lyrics are: "Su - per - cal - i - fra - gil - is - tic - ex - pi - al - ido - cious!". The piano accompaniment for this section is shown in two staves (treble and bass clefs) with a mezzo-forte (*mf*) dynamic, providing harmonic support for the vocal line.

9

The second vocal line is written on a single staff with a treble clef, a key signature of two flats, and a 4/4 time signature. It begins with a mezzo-forte (*mf*) dynamic. The lyrics are: "E - ven though the sound of is some - thing quite a - tro - cious.". The piano accompaniment for this section is shown in two staves (treble and bass clefs) with a mezzo-forte (*mf*) dynamic, providing harmonic support for the vocal line.

13

The third vocal line is written on a single staff with a treble clef, a key signature of two flats, and a 4/4 time signature. It begins with a mezzo-forte (*mf*) dynamic. The lyrics are: "If you say it loud e - nough you'll al - ways sound pre - co - cious.". The piano accompaniment for this section is shown in two staves (treble and bass clefs) with a mezzo-forte (*mf*) dynamic, providing harmonic support for the vocal line.

17

Su - per - cal - i - fra - gil - is - tic - ex - pi - al - i - do - cious!

Piano accompaniment for measures 17-20, featuring chords and melodic lines in both hands.

21

mp Um did-dle id - dle id - dle um did-dle ay. *mf* Um did-dle id - dle id - dle um did-dle ay. Be -

Piano accompaniment for measures 21-24, featuring chords and melodic lines in both hands.

25

cause I was a - fraid when I was just a lad, me

Piano accompaniment for measures 25-28, featuring chords and melodic lines in both hands.

29

fath - er gave me nose a tweak and told me I was bad. But

Piano accompaniment for measures 29-32, featuring chords and melodic lines in both hands.

33

then one day I learnt a word that saved me ach - in' nose. The

33

37

big - gest word you e - ver heard and this is how it goes. Oh!

37

41

Su - per - cal - i - fu - ra - is - tic - ex - pi - al - i - do - cious!

41

45

E - ven though the sound of it is some - thing quite a - tro - cious.

45

49

If you say it loud e - nough you'll al - ways sound pre - co - cious.

49

53

Su - per - cal - i - fra - gil - is - tic - ex - pi - al i do - cious!

53

57

Um did-dle id - dle id - dle um did-dle ay. Um did-dle id - dle id - dle um did-dle ay. I

57

61

Posh

tra - velled all a - round the world and ev - 'ry - where I went I'd

61

65

mf

use me word and all would say, "There goes a clev - er gent!" When

65

mf

69

sub. p

dukes and ma - ha - ra - jahs passed the time of day with me I'd

69

f

3

73

f

mp

say me spe - cial word and then they'd ask me out to tea! Oh!

73

sub. p

f

mp

77

legato

Su - per - cal - i - fra - gil - is - tic - ex - pi - al - i - do - cious!

77

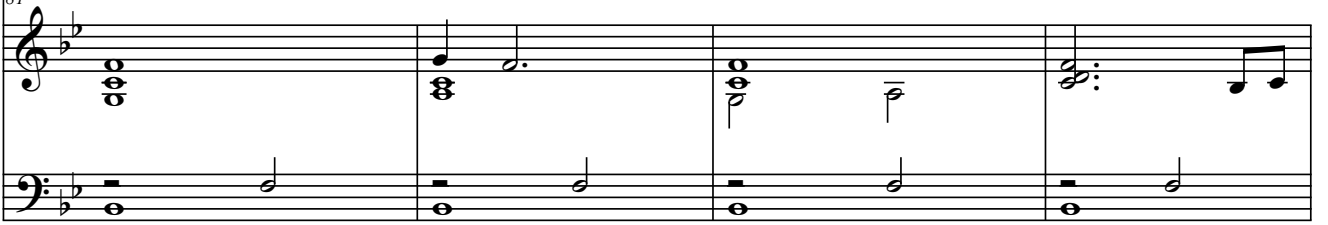
legato

81



E - ven though the sound of it is some - thing quite a - tro - cious.

81



85



If you say it loud e - nough you'll al - ways sound re - co - cious.

85



89

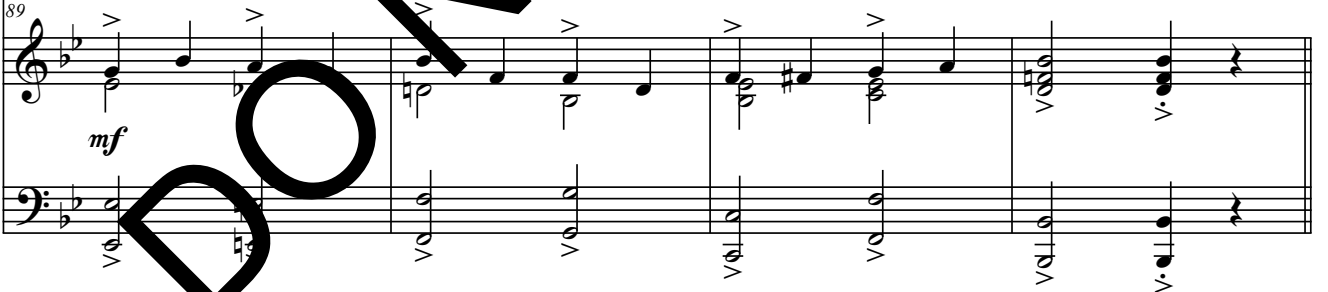
mf



Su - per - cal - i - fra - mil - is - tic - ex - pi - al - i - do - cious!

89

mf



93



Um did-dle id - dle id - dle um did-dle ay. Um did-dle id - dle id - dle um did-dle ay.

93



97



Um did-dle id -dle id -dle um did-dle ay. Um did-dle id -dle id -dle um did-dle ay. So

97



101

piu mosso



when the cat has got your tongue there's no need for s - may. Just

101

piu mosso

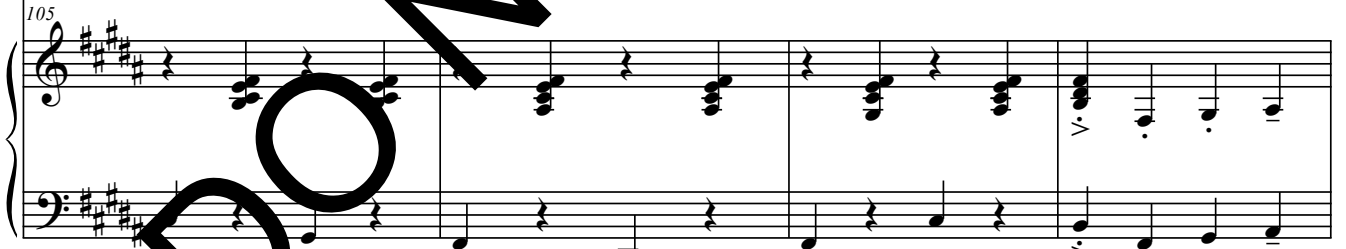


105



sum - mon up this word and then you've got a lot to say. But

105



109

poco rit.



bet - ter use it care - ful - ly or it could change your life. One

109

poco rit.



113

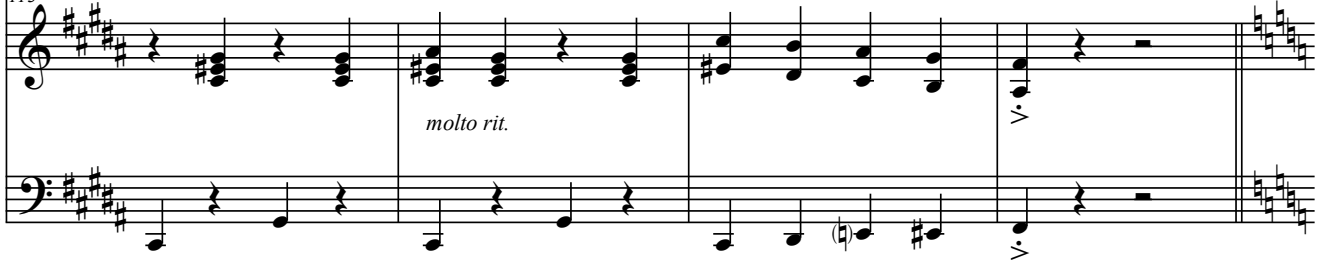
molto rit.



night I said it to me girl, and now me girl's me wife!

113

molto rit.



Faster

119

f

117



Su - per - cal - i - tra - gil - is - tic -

117

fp

f

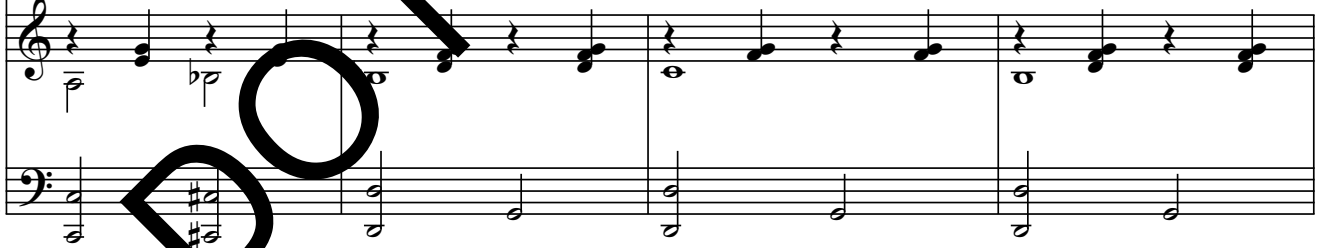


121



ex - pi - al - i - do - rious! E - ven though the sound of it is

121



accel. poco a poco

125



some - thing quite a - tro - cious. If you say it loud e - nough you'll

125

accel. poco a poco



SOPRANO

129

Musical staff for Soprano voice, measures 129-132.

al - ways sound pre - co - cious. Su - per - cal - i - fra - gil - is - tic!

129

Piano accompaniment for measures 129-132.

ALTO

TUTTI

Go like the clapper

133

Musical staff for Alto voice, measures 133-136.

Su - per - cal - i - fra - gil - is - tic! Su - per - cal - i -

133

Piano accompaniment for measures 133-136.

137

Musical staff for Alto voice, measures 137-140.

fra - gil - tic - - - ex - - - pi - - -

137

Piano accompaniment for measures 137-140.

141

Musical staff for Alto voice, measures 141-144.

al - - - i - - - do - - -

141

Piano accompaniment for measures 141-144.



145 *ff*

cious! _____ Su - per - cal - i -

148

fra - gil - is - tic - ex - pi - al - i - d - cious!

DO NOT COPY